



Ocean

Gres Porcellanato - Effetto Pietra

Indoor . Outdoor . Tile . Italian . Design



Interno piscina Ocean Nicobare Nut 15x15
Esterno piscina Ocean Nicobare Nut 30x60 Antislip R11 / Ocean Bali Grey 30x60 Antislip R11

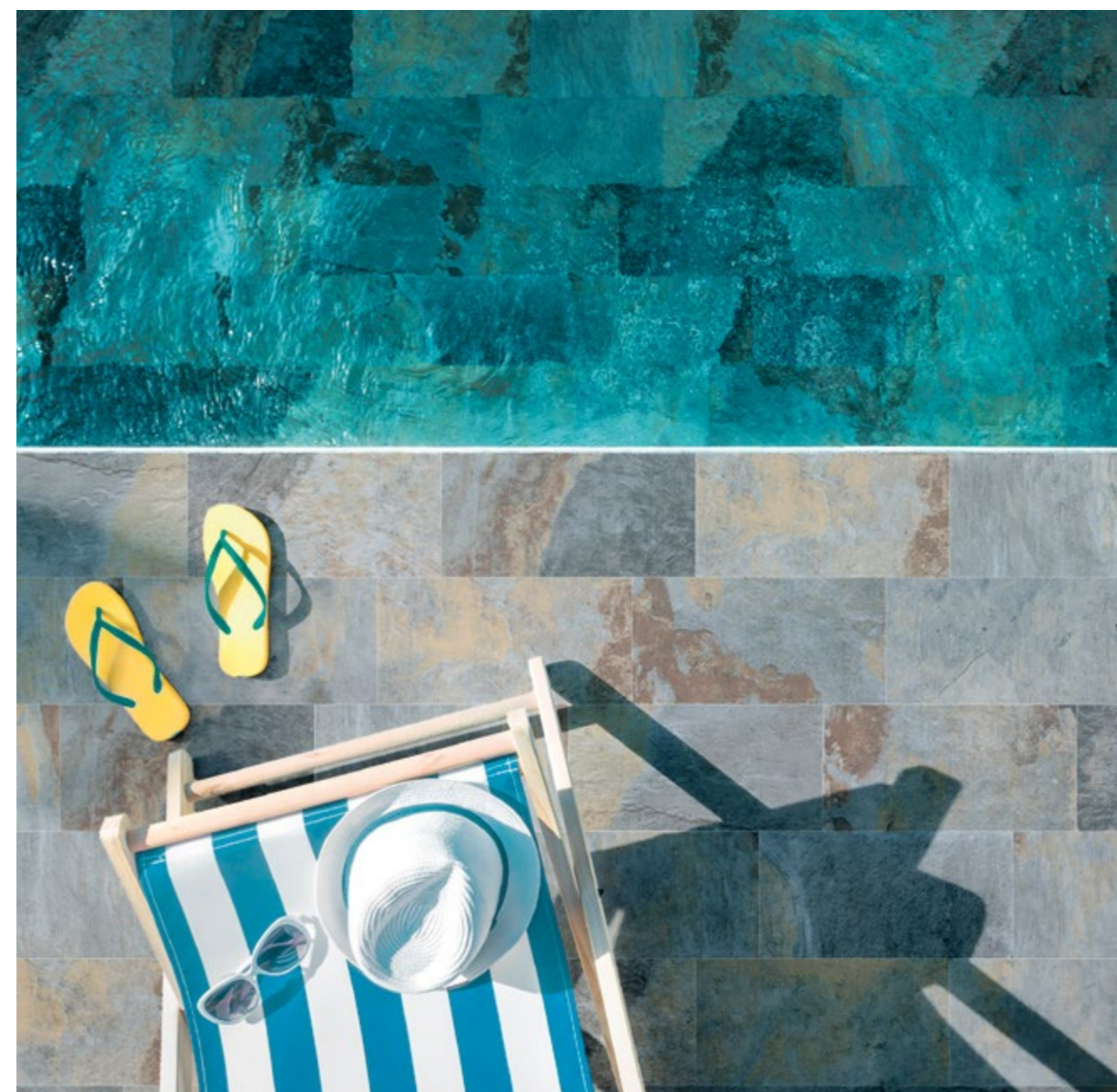
OCEAN



La collezione Ocean di Savoia afferma la superba abilità di riproduzione della pietra naturale, fedelmente riproposta riproducendo i tratti somatici e caratteristici presenti in natura, sfruttando le ultime tecnologie digitali. Le variazioni nette di tonalità e di colore abbinati ad una struttura leggermente mossata a rilievo fanno del prodotto un'opera unica, che prende pregio e meraviglia a quanta più distensione gli si concede. Pregio e tecnologia, un'opera unica. Savoia Italia spa.

Savoia Italia affirms its superb ability in reproducing natural stones with the collection OCEAN. The ultimate digital technologies used, faithfully replicate the characteristics and features found in nature. The intense variation in tone and color, combined to a slightly structured surface, render the collection an exclusive masterpiece.* Lay outs in large locations add value for the creation of astonishing and awe-inspiring sights. Value and technology, a unique piece of artwork. Savoia Italia spa.

Interno piscina Ocean Fiji Turquoise 30x60
Esterno piscina Ocean Fiji Turquoise 30x60 R11



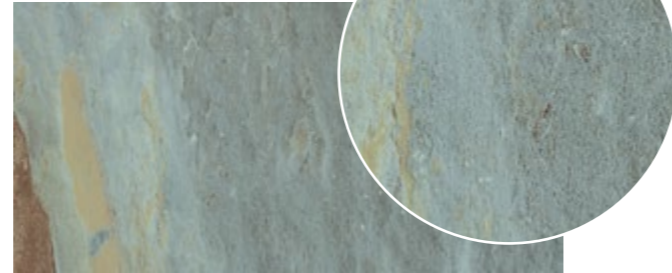
Gamma Colori

Fiji Turquoise



| IN | OUT |
|-------|------------------|
| 30x60 | 30x60 R11 |
| 15x15 | 15x15 R11 |

Bahia Green



| IN | OUT |
|-------|------------------|
| 30x60 | 30x60 R11 |
| 15x15 | 15x15 R11 |

Nicobare Nut



| IN | OUT |
|-------|------------------|
| 30x60 | 30x60 R11 |
| 15x15 | 15x15 R11 |

Bali Grey



| IN | OUT |
|-------|------------------|
| 30x60 | 30x60 R11 |
| 15x15 | 15x15 R11 |

Caratteristiche Tecniche



| Formati Sizes | 30x60 | 30x60 R11 | 15x15 | 15x15 R11 |
|----------------------|-------|------------------|-------|------------------|
| Ocean Fiji Turquoise | ■ | ■ | ■ | ■ |
| Ocean Bahia Gree | ■ | ■ | ■ | ■ |
| Ocean Nicobare Nut | ■ | ■ | ■ | ■ |
| Ocean Bali Grey | ■ | ■ | ■ | ■ |

| Collezione | Colore | Formato | Finitura | Superficie | Cod. | 9 mm | Cl.p. | |
|------------|----------------|---------|----------|---------------------|----------|------|-------|---|
| Ocean | Bahia Green | 30x60 | - | - | S107001 | 9 mm | 35 ● | V |
| Ocean | Bahia Green | 30x60 | - | Antislip R11 | S107001A | 9 mm | 35 ● | V |
| Ocean | Bahia Green | 15x15 | - | - | S57001 | 9 mm | 43 ● | V |
| Ocean | Bahia Green | 15x15 | - | Antislip R11 | S57001A | 9 mm | 43 ● | V |
| Ocean | Bali Grey | 30x60 | - | - | S107002 | 9 mm | 35 ● | V |
| Ocean | Bali Grey | 30x60 | - | Antislip R11 | S107002A | 9 mm | 35 ● | V |
| Ocean | Bali Grey | 15x15 | - | - | S57002 | 9 mm | 43 ● | V |
| Ocean | Bali Grey | 15x15 | - | Antislip R11 | S57002A | 9 mm | 43 ● | V |
| Ocean | Fiji Turquoise | 30x60 | - | - | S107101 | 9 mm | 35 ● | V |
| Ocean | Fiji Turquoise | 30x60 | - | Antislip R11 | S107101A | 9 mm | 35 ● | V |
| Ocean | Fiji Turquoise | 15x15 | - | - | S57101 | 9 mm | 43 ● | V |
| Ocean | Fiji Turquoise | 15x15 | - | Antislip R11 | S57101A | 9 mm | 43 ● | V |
| Ocean | Nicobare Nut | 30x60 | - | - | S107201 | 9 mm | 35 ● | V |
| Ocean | Nicobare Nut | 30x60 | - | Antislip R11 | S107201A | 9 mm | 35 ● | V |
| Ocean | Nicobare Nut | 15x15 | - | - | S57201 | 9 mm | 43 ● | V |
| Ocean | Nicobare Nut | 15x15 | - | Antislip R11 | S57201A | 9 mm | 43 ● | V |

| Battiscopa | SBT+Cod. | Gradone | SCR+Cod. | Ang. Gradone | SACR+Cod. | El. L Monolitico | SEL+Cod.+MON | El. L | SEL+Cod. |
|------------|----------|-----------|----------|--------------|-----------|------------------|--------------|---------|----------|
| 6,5x60 | 8x◆ 9● | 30x60+3+3 | 4x◆ 68● | 30x60+3+3 | 2x◆ 103● | 15x30+4 | 8x◆ 15● | 30x60+5 | 4x◆ 40● |

| Imballi Packing | Pcs/Box | Mq/Box | ≅ Kg/Box | Box/Pallet | Mq/Pallet | ≅ Kg/Pallet |
|-----------------|---------|--------|----------|------------|-----------|-------------|
| 30x60 | 7 | 1,26 | 24,73 | 40 | 50,40 | 1.010,00 |
| 15x15 | 44 | 0,99 | 19,43 | 48 | 47,52 | 952,81 |



Via Ghiarola Nuova, 77
41042 Fiorano Modenese (MO) Italy
TEL.: +39 0536 838411
info@savoiaitalia.com
www.savoiaitalia.it